

# POPULATION DATA SCIENCE SUMMER INTERNSHIP PROGRAMME 2025



Swansea  
University  
Prifysgol  
Abertawe

Population Data Science  
Faculty of Medicine, Health & Life Science  
Gwyddor Data Poblogaeth  
Y Gyfadrn Meddygaeth, Gwyddor Iechyd a Bywyd

Pioneering Population Data Science for Public Good

[www.popdatasci.swan.ac.uk](http://www.popdatasci.swan.ac.uk)

# ABOUT OUR AWARD-WINNING TEAM

---

[Population Data Science at Swansea University](#) is a cutting-edge research centre based in Swansea University Medical School, Faculty of Medicine, Health & Life Science. Specialising in secure-linked data analysis of health, social and other administrative data sources.

Our award-winning team are focused on delivering a world-class technology infrastructure to tackle some of the biggest challenges facing today's society and enable opportunities - creating a global research ecosystem with the potential to produce educational, environmental, economic, and societal impact.

Our team is involved with various [projects and research programmes](#), conducting different methodological and applied skills across multiple disciplines to support and achieve our world-leading innovations. These skills include but are not limited to software development, database development and management, epidemiology, statistics, data mining, data visualisation, web development, project management, patient public and stakeholder engagement and Geographical Information Systems.

WE ARE  
PIONEERING  
POPULATION  
DATA SCIENCE



# WHY SHOULD YOU APPLY TO OUR INTERNSHIP PROGRAMME?

---

01

Gain **work experience** with an award-winning team at the forefront of global population data science research.

02

Develop **new skills** with real-world data analysis to develop and apply your skills in this highly secure, state-of-the-art environment.

03

Explore a **career path** in Population Data Science and find out what fits you best.

04

Gain **confidence with** our internship programme. It is a perfect way to help you gain experience transitioning from university to full-time employment. You can gain valuable insights and knowledge, participate in meetings, and perform assigned tasks in a real-world setting.

05

**Network and work alongside a team of highly skilled professionals** including your supervisors and mentors you meet during your internship, who can be valuable references as you pursue a full-time job.

06

**Build a strong CV** and give yourself a head start with the internship.

07

Some interns have become **full-time employees**: Kellie Robinson and Rowan Dash from our 2023 intern cohort, both secured full-time positions in the SERP team at Population Data Science after their internships. [Find out more about their journey here.](#)

08

**Paid employment for 12 weeks**, including annual leave entitlement.

09

The program culminates in the **Showcase Event** with an opportunity for interns to present their projects. [Check out the highlights from last year's Showcase event in this video.](#)

# Population Data Science Internship: Project 09



## Title: A Review of Literature on Outcomes of Careers Support and Guidance for Children and Adults

**Summary:** This internship will aim to complete a review of the literature on the effectiveness of career support and guidance in delivering positive outcomes for clients. The successful applicant will be supported to undertake a systematic review of the literature, including searching electronic databases for academic research, policy documents and evaluations related to career guidance.

The project will involve defining the scope of the review, screening studies for their relevance to the review question, summarising the key findings, assessing the robustness of evidence and considering methodologies. The successful applicant will gain experience in how to locate and critically assess evidence from different sources. This opportunity will provide an understanding of undertaking a literature review and the opportunity to produce reports based on the findings. This work will support the Skills and Employability Research Theme within ADR Wales in which we are utilising careers guidance data.

### Outcome by the end of 12 weeks:

- Complete a literature review on career guidance outcomes for children and adults.
- Produce a summary table of the literature review.
- Produce one or two short written reports on the findings of the literature review.
- Gain an understanding of data on career guidance in Wales.

### Skills/background suited:

#### Essential

- Background/experience in literature reviews.
- Good communication and writing skills

#### Desirable

- Interest in education, employment and career guidance.

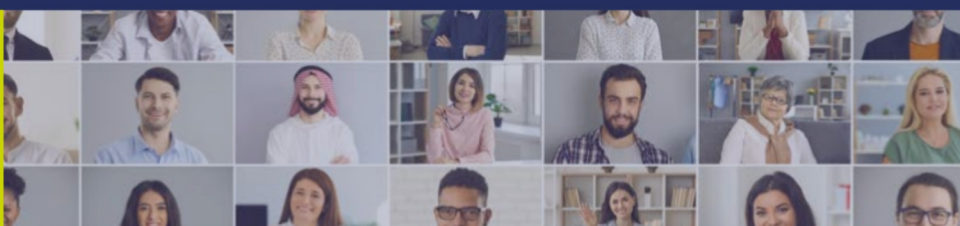
# FIND OUT MORE ABOUT THE CENTRES SUPPORTING THIS YEAR'S PROGRAMME



**SAIL Databank** is a safe haven for billions of person-based records, which enables researchers to answer important questions for the benefit of society. Researchers can access a broad range of routinely collected data spanning up to 30 years from an entire population.

SAIL Databank achieves this by working collaboratively with data guardians, academics, regulators, members of the public, practitioners, and policymakers from Wales, across the UK and internationally.

The SAIL Databank holds de-identified data in linkable form and, following further safeguards, makes selected data available for analysis in anonymised form. Approved researchers can access the data remotely anywhere in the world, complete with analysis tools. Because the data accessed for research is anonymised, the work is carried out without researchers knowing the identities of the individuals represented.



**Secure eResearch Platform (SeRP)** is the complete customisable solution for data sharing, linkage and analysis in a safe, secure and controlled environment that's accredited to the highest international standard. It does this in a governed environment allowing data owners to remain in full control at all times.

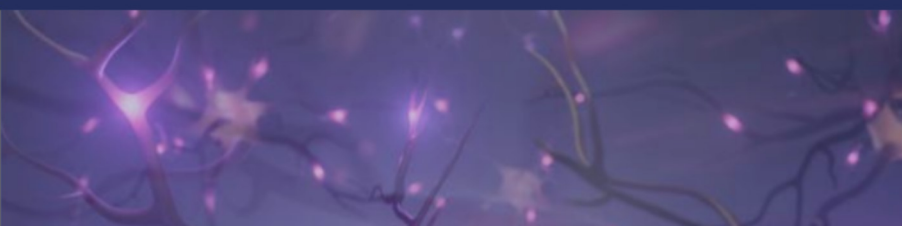
SeRP is the perfect solution for any organisation that has accumulated a large amount of data, that intends to share that data for the purposes of research and long term benefit to society, and that wants to do so in the most secure and safe way possible to reduce associated risks. SeRP can benefit sectors including healthcare, governments, academic Research, industry, charities & Not-for-profit organisations.

For more information on the benefits of SeRP, visit [SeRP Benefits](#)

# FIND OUT MORE ABOUT THE CENTRES SUPPORTING THIS YEAR'S PROGRAMME



**ADR Wales (Administrative Data Research Wales)** unites specialists in each field from Population Data Science at Swansea University and the Wales Institute of Social and Economic Research and Data (WISERD) at Cardiff University with statisticians, economists and social researchers from Welsh Government. The partnership is ideally placed to maximise the utility of anonymous and secure data to shape public service delivery, which will ultimately improve the lives of people in Wales. The work carried out by the ADR Wales team covers areas such as early years, education, skills and employability, health and well-being, housing and homelessness, social care, mental health, social justice, climate change and major societal challenges.



**Dementias  
Platform UK**

**Dementias Platform UK Data Portal** brings together records of over 3 million people in a free-to-access resource.

Researchers can use the portal to identify which cohorts are relevant to them, apply for access to the data and then analyse it in a secure, remote environment complete with data linkage and analysis packages.

The portal brings the records together, ensures they are secure, supports data linkage studies using phenotypic, genomic, and imaging data, and makes them readily available for the benefit of academia, industry, regulators, health care providers, patients, and the public.

# HOW TO APPLY

To find out more about the Summer Internship Programme, visit:

[www.popdatasci.swan.ac.uk/about-us/summer-internship-programme/](http://www.popdatasci.swan.ac.uk/about-us/summer-internship-programme/)



Swansea  
University  
Prifysgol  
Abertawe

Population Data Science  
Faculty of Medicine, Health & Life Science

Gwyddor Data Poblogaeth  
Y Gyfadrn Meddygaeth, Gwyddor Iechyd a Bywyd

Pioneering Population Data Science for Public Good

[www.popdatasci.swan.ac.uk](http://www.popdatasci.swan.ac.uk)